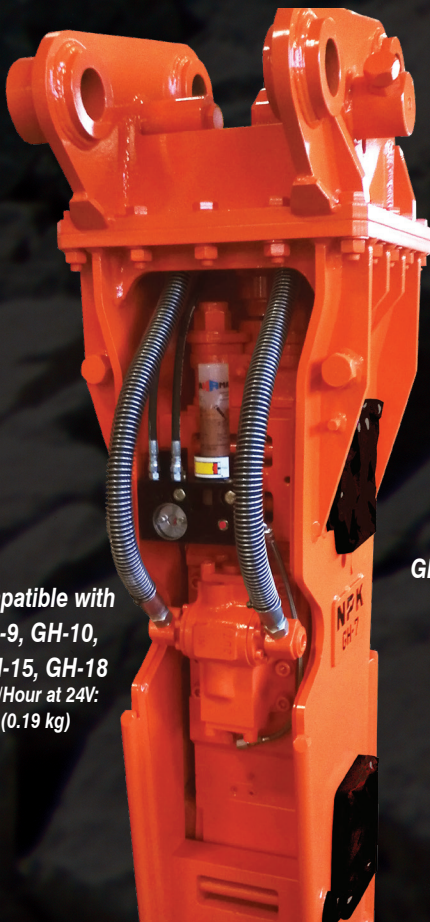


NPK



Hammer Mounted Auto Lubes

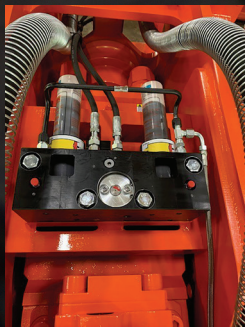


**G025: Compatible with
GH-7, GH-9, GH-10,
GH-12, GH-15, GH-18**
Max Output/Hour at 24V:
0.43 lbs (0.19 kg)

**G015: Compatible with
PH-3, PH-4, GH-6**
Max Output/Hour at 24V:
0.43 lbs (0.19 kg)



**G050: Compatible with
GH-23, GH-30, GH-40, GH-50**
Max Output/Hour at 24V:
0.85 lbs (0.38 kg)



- Automatic lubrication systems ideal for hammers used on multiple machines
- Hydraulically-driven, automatically providing a continuous supply of grease while hammer is running
- Reduce maintenance costs by extending hammer tool bushing life
- Reduce labor costs due to elimination of manual greasing
- Reliable even in low temperatures
- Suitable for special lubricants including copper-based pastes
- All NPK Auto Lube Systems include mounting hardware and adapter fittings
- Various cartridge adapters available for conforming to different size grease tubes
- Cartridge refill adapter provided with pump for refilling grease tubes

NPK ATTACHMENTS...designed, built and backed by NPK.

Carrier Mounted Auto Lubes

NPK HAMMER/CARRIER MOUNTED AUTO LUBE COMPATIBILITY

	PH3	PH4	GH6	GH7	GH9	GH10	GH12	GH15	GH18	GH23	GH30	GH40	GH50
G-075													
G-075L													
G-100													
G-100L													
G-150													
G-150L													
G-153													
G-153L													
G-175													
G-175L													
G-186													
G-186L													

Auto Lube Features

- Automatic lubrication systems ideal for dedicated hammer carriers
- Hydraulically-driven, automatically providing a continuous supply of grease while hammer is running
- Reduce maintenance costs by extending hammer tool bushing life
- Reduce labor costs due to elimination of manual greasing
- Reliable even in low temperatures
- Suitable for special lubricants including copper-based pastes
- All NPK Auto Lube Systems include mounting hardware and adapter fittings. (NOTE: Hose from Auto Lube to Hammer is not included and is a dealer-supplied option.)
- L models come with a low level switch that activates a warning light and buzzer in the cab, and can be wired (on solenoid energized circuits) to shut off hammer when insufficient grease levels are detected
- High pressure pump capable of pumping EP2 grease in cold weather *Note: Grease density changes by type and temperature
- Six (6) month Base Warranty, twelve (12) month Extended Warranty

G-075/G-075L G-100/G-100L G-150/G-150L G-153/G-153L G-175/G-175L G-186/G-186L

Reservoir Capacity	4.4 lbs (2 kg)	8.8 lbs (4 kg)	8.8 lbs (4 kg)	17.6 lbs (8 kg)	8.8 lbs (4 kg)	17.6 lbs (8 kg)
Max Output/Hr at 24V	0.5 lbs (0.22 kg)	0.5 lbs (0.22 kg)	1 lb (0.44 kg)	1 lb (0.44 kg)	1.5 lbs (0.68 kg)	1.5 lbs (0.68 kg)
Models	PH-3, PH-4	GH-6, GH-7, GH-9	GH-10, GH-12, GH-15, GH-18, GH-23		GH-30, GH-40, GH-50	

NOTE: Max Outputs specified are per hour at 24V. (Numbers would be half at 12V.)

LUBRICANTS

It is recommended that special lubricants be used in your NPK Hammer to protect premature wear of tool bushings and tool. NPK grease products contain additives that resist extreme pressures and heat.

Our specially formulated moly-based grease and chisel paste are available through your local NPK dealer. NPK lubricants are offered in 14 oz. cartridges, 35 lb. pails, 120 lb. kegs, 400 lb. drums or refillable cartridges for Hammer Mounted Auto Lube Systems.



NPK Construction Equipment, Inc.

7550 Independence Drive | Walton Hills, OH 44146-5541
Phone (440) 232-7900

npkce.com



For more information on Auto Lubes

Each product sold by NPK is subject to an express written warranty. NPK makes no other warranty, express or implied, including any warranty of merchantability or fitness for any particular purpose. NPK is not liable for any incidental or consequential damages.

Printed in U.S.A. Form No. B05-0100 (08/23)

© Copyright 2023. NPK Construction Equipment, Inc.