

Maximum Crushing & Cutting Force and Industry-Leading Cycle Times!

Favorable Power-to-Weight Ratio Due to Hydraulic Booster

Engineered and Manufactured for Primary and Secondary Crushing

Comprehensive Dealer Network Providing Sales, Parts and Service, and Backed by the Industry's Best Support!



- Full 360° hydraulic rotation available for easy repositioning
- Bolt-on replaceable tooth plates for all "A" models
- On-the-Job processing of material, reduces overall cost
- Promotes safer working environment by reducing the need for cutting torches
- NPK's Integrated Hydraulic Booster improves crushing power and achieves faster cycle times, therefore increasing productivity and performance

NPK's Concrete Crushers are designed to effectively handle any primary and/or secondary demolition and recycling operation. NPK Crushers easily cut through reinforced concrete and light steel structures allowing material to be separated and recycled while simultaneously permitting easier handling of material.

SPECIFICATIONS

NPK Model	Recommended Carrier Weight (lb-metric tons)	Working Weight** (lb-kg)	Max Jaw Opening (in-mm)	Jaw Width (in-mm)	Cycle Time*** (sec)	Oil Flow (gpm-lpm)	Operating Pressure (psi-bar)	Max Crushing Force at Tip (lbf-kN)
U-21JA	42,000 - 62,000 lb 19 - 28 metric tons	4,800 lb 2,180 kg	31.5 in 800 mm	18.1 in 460 mm	1.6 close 0.8 open	26 - 53 gpm 100 - 200 lpm	3,770 psi 260 bar	145,000 lbf 645 kN
U-21JRA*	42,000 - 62,000 lb 19 - 28 metric tons	5,650 lb 2,565 kg	31.5 in 800 mm	18.1 in 460 mm	1.6 close 0.8 open	26 - 53 gpm 100 - 200 lpm	3,770 psi 260 bar	145,000 lbf 645 kN
U-31JA	62,000 - 106,000 lb 28 - 48 metric tons	6,250 lb 2,835 kg	38.6 in 980 mm	23.2 in 590 mm	2.9 close 1.6 open	26 - 66 gpm 100 - 250 lpm	4,060 psi 280 bar	258,530 lbf 1,150 kN
U-31JRA*	62,000 - 106,000 lb 28 - 48 metric tons	7,300 lb 3,310 kg	38.6 in 980 mm	23.2 in 590 mm	2.9 close 1.6 open	26 - 66 gpm 100 - 250 lpm	4,060 psi 280 bar	258,530 lbf 1,150 kN
U-45J	90,000 - 110,000 lb 41 - 50 metric tons	9,400 lb 4,265 kg	44.5 in 1,130 mm	25.6 in 650 mm	3.0 close 1.6 open	46 - 73 gpm 175 - 275 lpm	4,350 psi 300 bar	283,260 lbf 1,260 kN
U-45JR*	90,000 - 110,000 lb 41 - 50 metric tons	9,920 lb 4,500 kg	44.5 in 1,130 mm	25.6 in 650 mm	3.0 close 1.6 open	46 - 73 gpm 175 - 275 lpm	4,350 psi 300 bar	283,260 lbf 1,260 kN

* "R" models come with full 360° hydraulic rotation for maximum versatility. **Working weight includes mounting bracket. ***Cycle time is full stroke, without material, at maximum oil flow.

Specifications subject to change without notice.

Maximum productivity

Effectively crush, separate, and recycle material during primary and secondary demolition

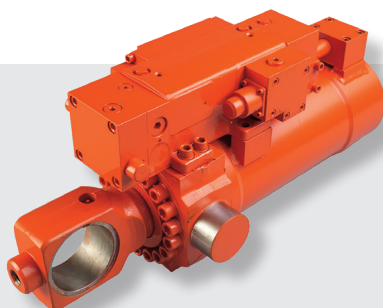
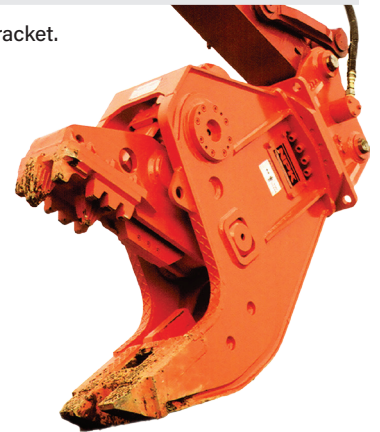
Rugged design for extended life

Manufactured from high-strength, abrasion-resistant steel with reinforced shield that protects the cylinder

Replaceable wear items

Replaceable wear items reducing downtime and increasing productivity

- » High-strength replaceable cutting blades
- » Bolt-on replaceable toothplates
 - "A" models equipped on both fixed and movable jaws
 - "Non-A" models equipped on movable jaw only



NPK's cylinder/booster design improves crushing/cutting power to handle the toughest jobs

Integral hydraulic booster system automatically boosts power when the jaws meet resistance, providing maximum crushing force and faster cycle times, improving productivity with a greater power-to-weight-ratio.

Each product sold by NPK is subject to an express written warranty. NPK makes no other warranty, express or implied, including any warranty of merchantability or fitness for any particular purpose. NPK is not liable for any incidental or consequential damages.

Printed in U.S.A. Form No. B10-0100 (04/24)
© 2024, NPK Construction Equipment, Inc.



Scan for more information on Concrete Crushers



NPK Construction Equipment, Inc.

7550 Independence Drive
Walton Hills, OH 44146-5541
Phone (440) 232-7900

npkce.com