



# Demolition Shears

## Cutting Power— Processing Solutions

---

Perfect for Small  
Carriers, Tight Spaces,  
and Ideal for Internal  
Demolition

---

Full 360° mechanical or  
hydraulic rotation

---

Comprehensive Dealer  
Network Providing  
Sales, Parts and  
Service, and Backed  
by the Industry's  
Best Support!



**NPK ATTACHMENTS DESIGNED, BUILT & BACKED BY NPK**

### SPECIFICATIONS

NPK Model	Skid Steer (lb-kg)	Excavator Class 2nd Member (lb-metric tons)	Excavator Class 3rd Member (lb-metric tons)	Working Weight* (lb-kg)	Max Jaw Opening (in-mm)	Max Jaw Depth (in-mm)	Cutter Length (in-mm)	Cycle Time** (sec)	Oil Flow (gpm-lpm)	Operating Pressure (psi-bar)	Max Cutting Force (lbf-kN)
K-3JFR	5,000 lb 2,270 kg	4,500-9,000 lb 2-4 metric tons	5,500-9,000 lb 2.5-4 metric tons	815 lb 370 kg	14.0 in 355 mm	13.9 in 352 mm	8.7 in 220 mm	1.2 close 0.6 open	8-16 gpm 30-60 lpm	2,610 psi 180 bar	164,110 lbf 730 kN
K-3JR	5,000 lb 2,270 kg	4,500-9,000 lb 2-4 metric tons	8,000-15,500 lb 3.5-7 metric tons	890 lb 405 kg	14.0 in 355 mm	13.9 in 352 mm	8.7 in 220 mm	1.2 close 0.6 open	8-16 gpm 30-60 lpm	2,610 psi 180 bar	164,110 lbf 730 kN
K-3JREH	5,000 lb 2,270 kg	4,500-9,000 lb 2-4 metric tons	9,000-15,500 lb 4-7 metric tons	1,090 lb 495 kg	14.0 in 355 mm	13.9 in 352 mm	8.7 in 220 mm	1.2 close 0.6 open	8-16 gpm 30-60 lpm	2,610 psi 180 bar	164,110 lbf 730 kN
K-4JFR	6,500 lb 2,950 kg	4,500-12,000 lb 2-5.5 metric tons	8,000-12,000 lb 3.5-5.5 metric tons	975 lb 440 kg	15.7 in 400 mm	15.7 in 400 mm	10.2 in 260 mm	1.3 close 0.7 open	8-19 gpm 30-70 lpm	2,610 psi 180 bar	179,850 lbf 800 kN
K-4JR	6,500 lb 2,950 kg	4,500-12,000 lb 2-5.5 metric tons	9,000-20,000 lb 4-9 metric tons	1,050 lb 475 kg	15.7 in 400 mm	15.7 in 400 mm	10.2 in 260 mm	1.3 close 0.7 open	8-19 gpm 30-70 lpm	2,610 psi 180 bar	179,850 lbf 800 kN
K-4JREH	6,500 lb 2,950 kg	4,500-12,000 lb 2-5.5 metric tons	10,000-20,000 lb 4.5-9 metric tons	1,250 lb 565 kg	15.7 in 400 mm	15.7 in 400 mm	10.2 in 260 mm	1.3 close 0.7 open	8-19 gpm 30-70 lpm	2,610 psi 180 bar	179,850 lbf 800 kN
K-7JFR	-	9,000-15,500 lb 4-7 metric tons	13,000-20,000 lb 6-9 metric tons	1,700 lb 770 kg	20.9 in 532 mm	21.0 in 534 mm	13.4 in 340 mm	1.3 close 0.7 open	13-34 gpm 50-130 lpm	3,045 psi 210 bar	290,000 lbf 1,290 kN
K-7JR	-	9,000-15,500 lb 4-7 metric tons	13,000-31,000 lb 6-14 metric tons	1,780 lb 810 kg	20.9 in 532 mm	21.0 in 534 mm	13.4 in 340 mm	1.3 close 0.7 open	13-34 gpm 50-130 lpm	3,045 psi 210 bar	290,000 lbf 1,290 kN
K-7JREH	-	9,000-15,500 lb 4-7 metric tons	13,000-31,000 lb 6-14 metric tons	1,820 lb 825 kg	20.9 in 532 mm	21.0 in 534 mm	13.4 in 340 mm	1.3 close 0.7 open	13-34 gpm 50-130 lpm	3,045 psi 210 bar	290,000 lbf 1,290 kN

\*Working weight includes mounting bracket. \*\*Cycle time is full stroke, without material, at maximum oil flow. Specifications subject to change without notice.

#### Robust and rugged design

- » Enclosed main frame with protected hose routing
- » Slim design for visibility
- » Diminished jaw deflection due to arm pin design

#### Faster, more efficient demolition and processing of scrap material

- » The design incorporates abrasion-resistant, high-strength bolt-on replaceable serrated cutting blades for better grip and increased control of material, as well as a robust handling tip for superior manipulation while processing scrap

#### 3 Rotation Options Available:

##### Mechanical/Free: "AFR" Models

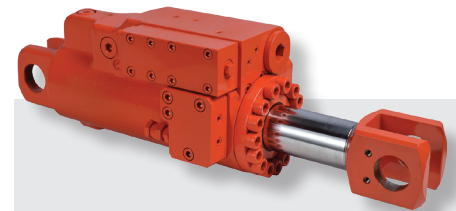
- » Mechanical rotation which allows to self-position on material and rotate throughout the bite

##### Full Hydraulic: "AR" Models

- » Equipped with a full hydraulic rotation system which requires a secondary hydraulic circuit

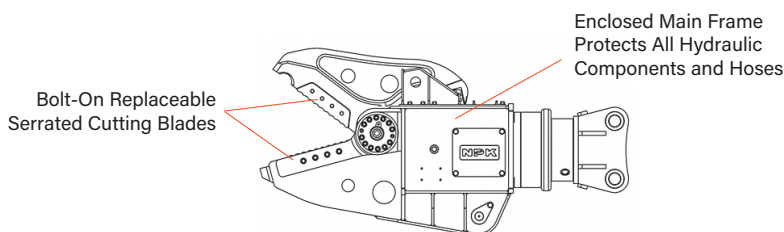
##### Electro-Hydraulic: "AREH" Models

- » Equipped with an electro-hydraulic selector valve allowing operation for both jaw and rotation off of a single auxiliary circuit and 12V power connection

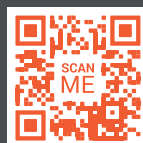


#### NPK's cylinder/booster design improves cutting power to handle the toughest jobs

Integral hydraulic booster system automatically boosts power when the jaws meet resistance, providing maximum shearing force and faster cycle times, improving productivity with a greater power-to-weight-ratio.



Each product sold by NPK is subject to an express written warranty. NPK makes no other warranty, express or implied, including any warranty of merchantability or fitness for any particular purpose. NPK is not liable for any incidental or consequential damages.



Scan for more information on Demolition Shears



NPK Construction Equipment, Inc.

7550 Independence Drive  
Walton Hills, OH 44146-5541  
Phone (440) 232-7900

npkce.com